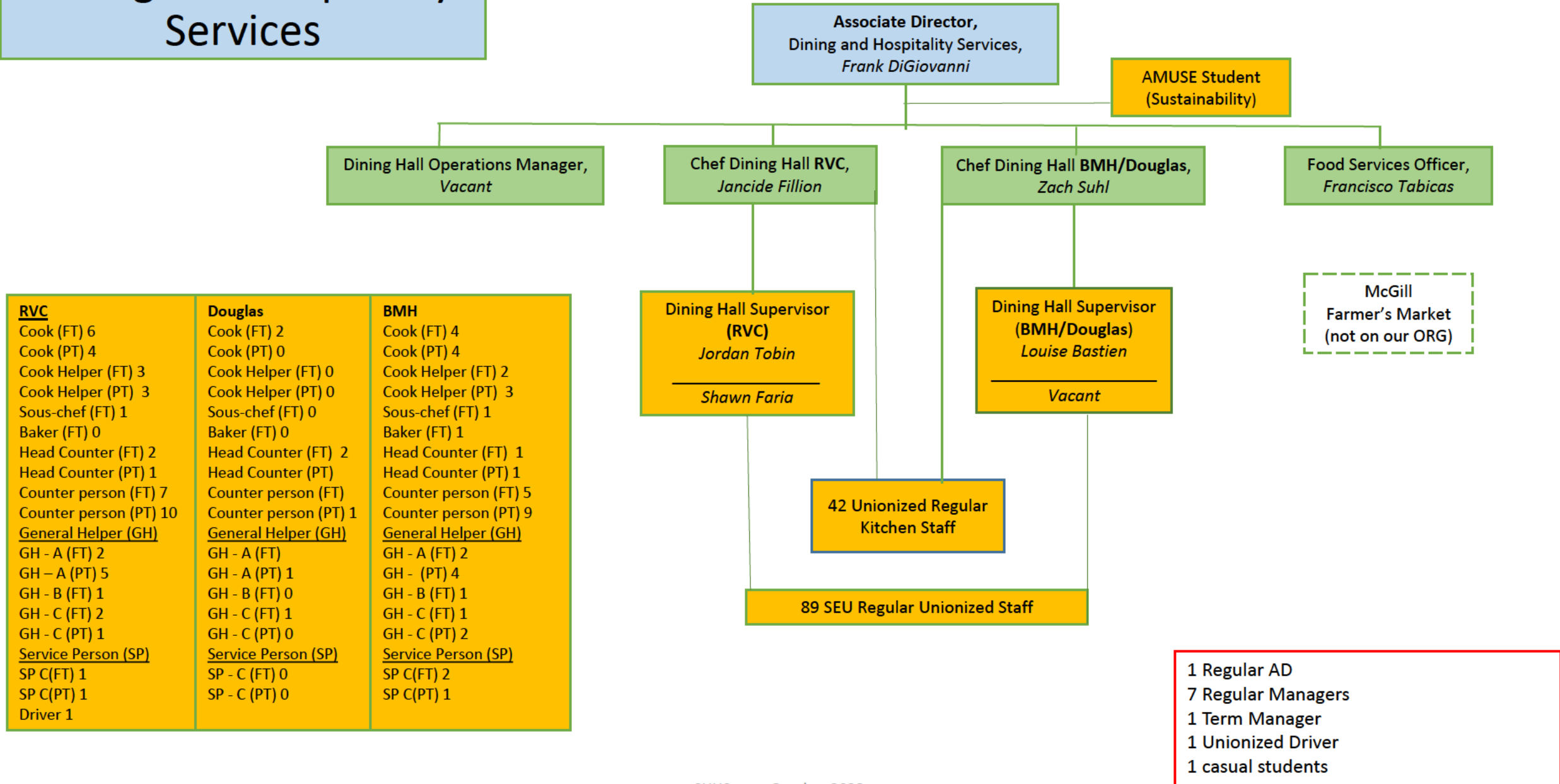


# Dining and Hospitality Services



| <u>RVC</u>                 | <u>Douglas</u>             | <u>BMH</u>                 |
|----------------------------|----------------------------|----------------------------|
| Cook (FT) 6                | Cook (FT) 2                | Cook (FT) 4                |
| Cook (PT) 4                | Cook (PT) 0                | Cook (PT) 4                |
| Cook Helper (FT) 3         | Cook Helper (FT) 0         | Cook Helper (FT) 2         |
| Cook Helper (PT) 3         | Cook Helper (PT) 0         | Cook Helper (PT) 3         |
| Sous-chef (FT) 1           | Sous-chef (FT) 0           | Sous-chef (FT) 1           |
| Baker (FT) 0               | Baker (FT) 0               | Baker (FT) 1               |
| Head Counter (FT) 2        | Head Counter (FT) 2        | Head Counter (FT) 1        |
| Head Counter (PT) 1        | Head Counter (PT)          | Head Counter (PT) 1        |
| Counter person (FT) 7      | Counter person (FT)        | Counter person (FT) 5      |
| Counter person (PT) 10     | Counter person (PT) 1      | Counter person (PT) 9      |
| <u>General Helper (GH)</u> | <u>General Helper (GH)</u> | <u>General Helper (GH)</u> |
| GH - A (FT) 2              | GH - A (FT)                | GH - A (FT) 2              |
| GH - A (PT) 5              | GH - A (PT) 1              | GH - (PT) 4                |
| GH - B (FT) 1              | GH - B (FT) 0              | GH - B (FT) 1              |
| GH - C (FT) 2              | GH - C (FT) 1              | GH - C (FT) 1              |
| GH - C (PT) 1              | GH - C (PT) 0              | GH - C (PT) 2              |
| <u>Service Person (SP)</u> | <u>Service Person (SP)</u> | <u>Service Person (SP)</u> |
| SP C(FT) 1                 | SP - C (FT) 0              | SP C(FT) 2                 |
| SP C(PT) 1                 | SP - C (PT) 0              | SP C(PT) 1                 |
| Driver 1                   |                            |                            |